

F35-5040-W5

Tablet Holder for Support Stand

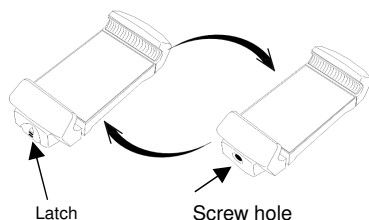


[Product Description]

Holder for a smartphone/tablet that instantly turns a commonly available support stand into an ICT-enabled one.

[Specifications]

- Ball-head & Supporting rod
 - Length: 230mm
 - Diameter of supporting rod: $\phi 8$ mm
 - Screw: U1/4
 - Movable round plate: dia. 33 mm
 - Max loading weight: 1000 g
- Holder (for smartphone/tablet)
 - Two-steps expandable spring mechanism
 - Max Length: 220 mm
 - Min Length: 95 mm
 - Weight: 60 g
 - Max loading weight: 500 g
 - Screw hole: U1/4 x 2
 - With a latch mechanism



[Overall Advantages to Users]

- ✓ When mounted with a smartphone/tablet, this product will turn your support stand into ICT-enabled labware equipped with a digital camera, video, or data-logging system including sensors helpful for efficient collection of various experimental results.
- ✓ A digital camera can be easily mounted on Ball-head thanks to U1/4 screw.

[Benefit]

[To teachers]

- ✓ No need to specially prepare/purchase ICT-enabled setting/equipment because teachers can utilize their smartphone, etc. with this product.

[To students]

- ✓ Shorter time and less effort is required for students to be skillful enough to use an ICT-enabled setting for collecting data from experiments and/or capturing images.

[Precaution]

- ✓ Do not try to clamp Holder on anything beyond the max loading weight of 500 g.
- ✓ When using Ball-head & Supporting rod alone (without Holder), do not load anything beyond the max loading weight of 1000 g.
- ✓ Firmly screw Supporting rod into Ball-head. Likewise, firmly screw Ball-head into Holder.
- ✓ Make sure to securely clamp everything including Supporting rod to your support stand.

[Keywords]

*Smartphone, *Tablet,
*ICT, *Data-Logging System, *Sensors,
*Support Stand, *Video, *Digital camera

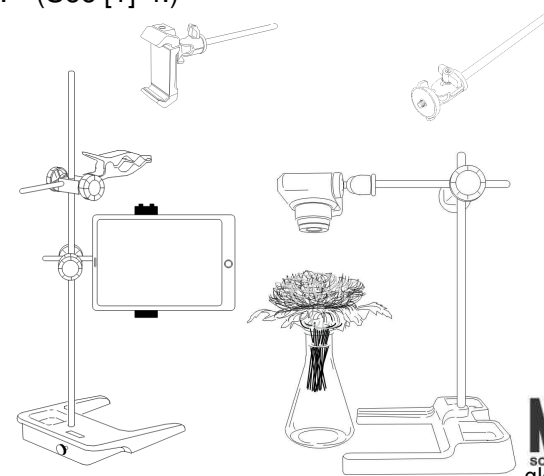
[Example of Usage]

[1] Combination of a tablet/smartphone and a support stand:

1. Choose either of the two holes threaded on the back and the side surface of Holder. Then, firmly screw Ball-head into the chosen threaded hole.
2. Insert Supporting rod into a cross clamp attached to your support stand, with clearance that can be narrowed down to 8 mm. Then, securely clamp the rod to your support stand.
3. When clamping Holder on your smartphone/tablet, of which width is:
 - 1) less than 100 mm, pull out the edge (closer to Ball-head) from Holder.
 - 2) 100 mm or more, unlock the latch and pull out both edges from Holder.
4. Make sure to securely clamp everything including Supporting rod to your support stand.

[2] Combination of a digital camera and a support stand:

1. Screw firmly a digital camera into Ball-head with Supporting rod.
2. (See [1]-2.)
3. (See [1]-4.)



May 2023

NaRiKa
SCIENCE IS JUST THERE
global.narika.jp